

AC2000 Galaxy Dimension

Intrusion Detection System Interface

Features that make a difference:

- Bi-directional communication between AC2000 Security Management System and Galaxy Dimension control panels.
- Import of Galaxy intruder panel alarms to AC2000
- Activated alarms shown instantly within AC2000 AED (Alarm Event Display)
- Keypad alarm cancellations reflected on AED
- Galaxy panels and sensor locations represented on AC2000 AED maps
- Galaxy intruder alarms included into AC2000 alarm reports
- Enable omitting zones and activating outputs on Dimension alarm panels
- Ethernet network interface
- Intuitive AC2000 setup and configuration tool
- Easily arm and disarm Galaxy Dimension Panels and groups

The AC2000 Galaxy® Dimension interface enables alarms from Galaxy intruder panels to be integrated with the AC2000 security management system. This enables AC2000 to act as the central Security Management System (SMS).

The AC2000 Galaxy Dimension interface enables zones from intruder panels to be placed as icons on the AC2000 AED (Alarm Event Display). This provides, on a single screen, a graphical representation of the physical layout of intruder sensors and allows for central alarm monitoring of both access control and intruder alarms.

Using the AC2000 Galaxy Dimension interface and the central AC2000 AED graphical maps, system operators can quickly identify an intruder alarm and its exact location on site. This allows for a fast response time and a centralised and integrated viewpoint of both security systems. When the Galaxy keypad is used to cancel Alarms, that cancellation is also sent to the AC2000 system, thus cancelling the alarms on the AED.

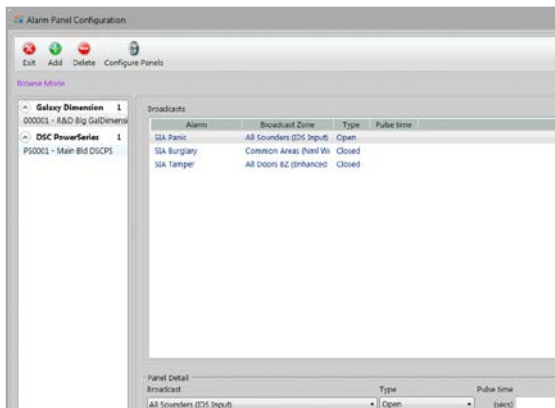
Combined with CCTV integration, intruder alarms can be used to enable video images to be recorded on a compatible video management system. The intruder detection system alarms can also be forwarded to other 3rd party monitoring systems such as Building Management System (BMS) for example.

Ease of Configuration

A simple alarm panel configuration application allows for the integration of intruder panel devices within the AC2000 system. Using this intuitive software interface, system administrators give the intruder panel a name, select the number of associated zones, state the starting address and add each panel to the system. The alarm panel configuration software simplifies the configuration of larger intruder panel systems by automatically creating and addressing entries in the AC2000 devices table thereby reducing the amount of data the operator must enter.

Alarm Panel Control

AC2000 software features dedicated application, which is using SIA Remote Control Codes to allow security administrator to Arm / Disarm Galaxy Panel or specific groups of Zones, as well as omit specific Zones within the Groups. The AC2000 application also allows to activate or deactivate specific types of Outputs on the Galaxy Panel.



Central monitoring and control of intruder / access control alarms

Alarms from Galaxy Dimension intruder panels are sent to the AC2000 system over Ethernet. Intruder alarms are then extracted and mapped to AC2000 system alarms which are sent to the AC2000 central database and AC2000 AED (Alarm Event Display) application for visual acknowledgement. Alarm icons, representing sensor locations can be placed on to AED graphical maps alongside access control readers and camera locations. Alarms are received, processed and reported on the AC2000 AED application for central management by security personnel. AC2000 AED can also show any errors or troubles with the Galaxy alarm panels, for example low battery.

Alarm Panel Configuration

The AC2000 Galaxy Dimension interface also accepts alarm information from the alarm panels over an Ethernet network.

Requirements

- AC2000 v6.8 software & upwards
- AC2000 Airport v6.8 software & upwards
- AC2000 Lite v6.8 software & upwards
- Galaxy alarm panel (GD48, GD96, GD264, GD520)
- Honeywell Ethernet Module
- Galaxy Panel Keypad (for programming)

Ordering Information

Product Code	Description
SWINT-GAL	AC2000 Galaxy interface

Related Products



AC2000
AC2000 Airport
AC2000 Lite

www.cemsys.com